

## Access Control System 2 Doors Access Controller

### Overview

After upgrade, it supports both OSDP and Wiegand protocol, and also have 5 SOCKET ports, abundant ports are reserved for future usage. It supports illegal card alarm linkage, alarm linkage to open door etc. Anson access controllers work with Anson Safesmart Plus software, we also supply API (SDK) to integrate different software and platforms.

### Specifications

User Capacity	20,000
Record Capacity	70,000
Access Group	200 group
Holiday Schedule	64 group, 30 day/group
Custom Wiegand	Yes (Max 66 bits)
Door Open Time	1 sec - 255 secs

### Electrical

Working Voltage	DC 12V
Working Current	Non-loaded <200mA

### Communication

TCP / IP	Yes
RS485	Yes
Communication Rate	10 / 100M (TCP / IP)

### Hardware

Reader Port	2
Exit Button Port	2
Door-magnet Port	2
Lock Output	2
Alarm Output	1
Self-defined Alarm Input	2

### Environment

Working Temperature	-20°C-55°C
Working Humidity	10%-90%

### Software

Support Software	Safesmart Plus and NSM
------------------	------------------------



We supply SDK and technical support  
We supply ODM service

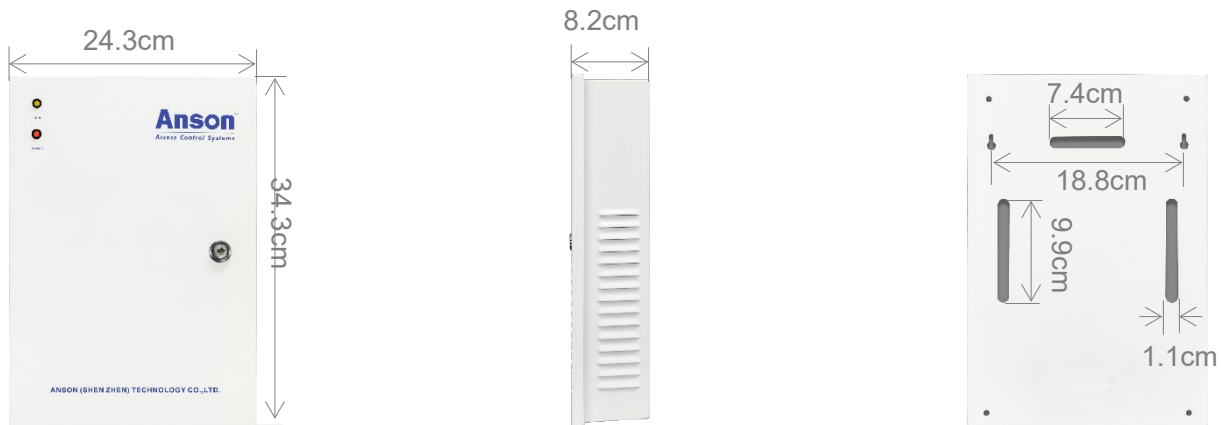
### Features

- ◆ Remote open door
- ◆ Arm/disarm by card
- ◆ Global Anti-passback and multi-door interlock
- ◆ Wiegand 26-66
- ◆ Self-defined door lock relay
- ◆ Force open / close door

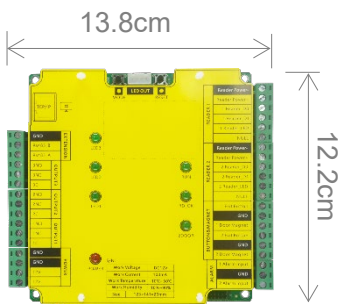
Focus on Access Control  
Since 2004



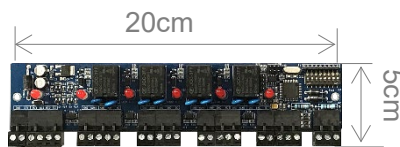
## Power Box Size



## Products Size

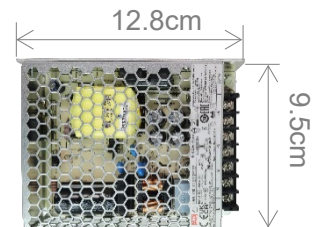


**Two Doors Panel**



**Alarm Extension Panel**

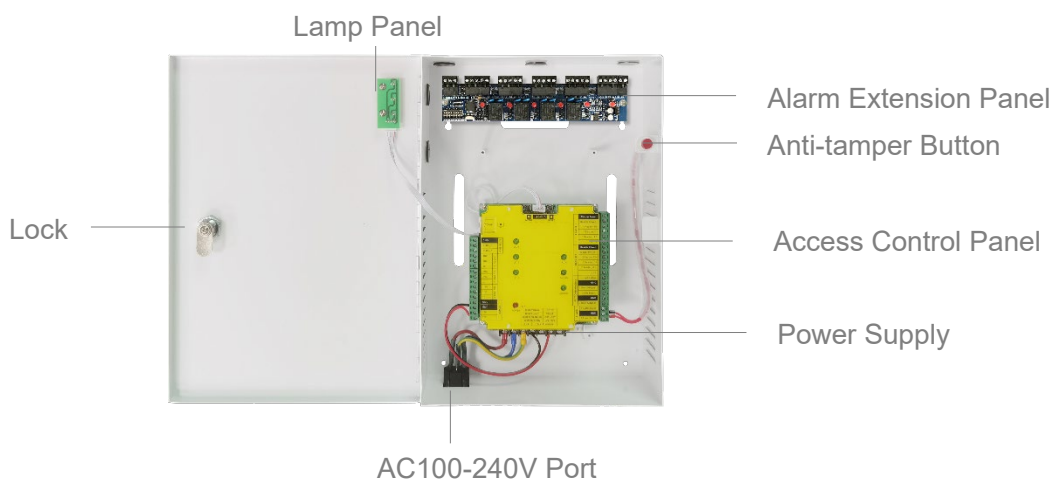
Communication mode: RS485  
 Alarm Input / Output: 4 / 4  
 Working voltage: DC 12V



**UL Power Supply**

Input: AC 100-240V  
 Output: DC 12V / 8.5A

## Structure

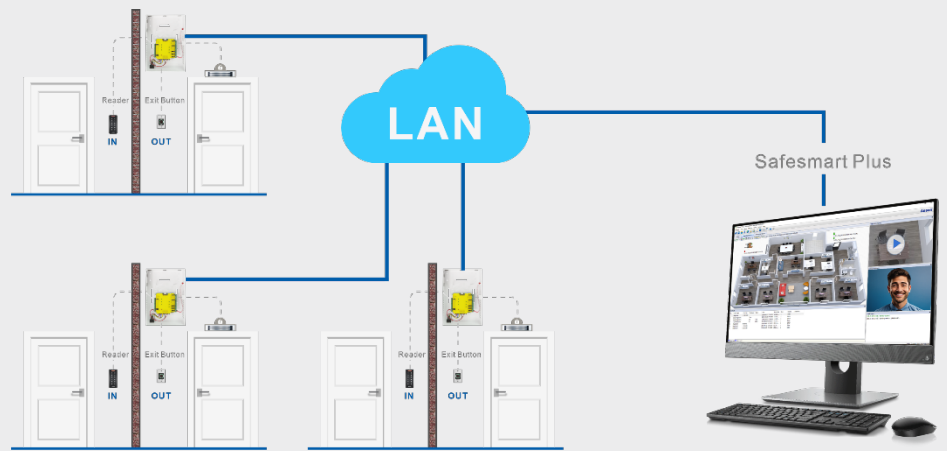


**Focus on Access Control**  
 Since 2004



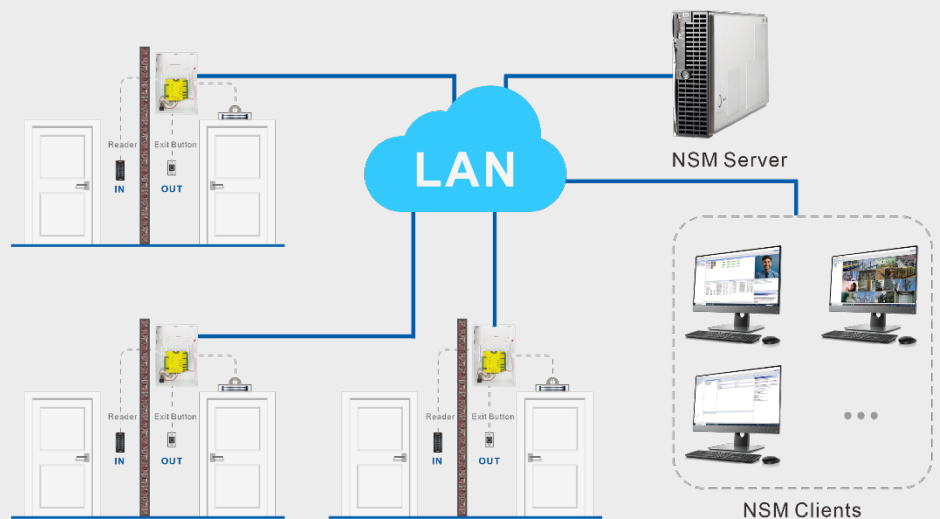
## Safesmart Plus Software

- ◆ It is free for access control, time attendance
- ◆ E-map and real-time monitoring
- ◆ Alarm linkage and image snapshot
- ◆ It can manage all Anson access control devices
- ◆ Employee information import and export



## NSM Multi-users Software Network Security Platform

- ◆ Unified video and access control security management
- ◆ Server+clients mode, different cities and areas management
- ◆ There is no limit on the number of access control devices to manage
- ◆ Multi-users online management software
- ◆ Employee information import and export



**Focus on Access Control**  
Since 2004

